

Tipo - Type

006-A39-22

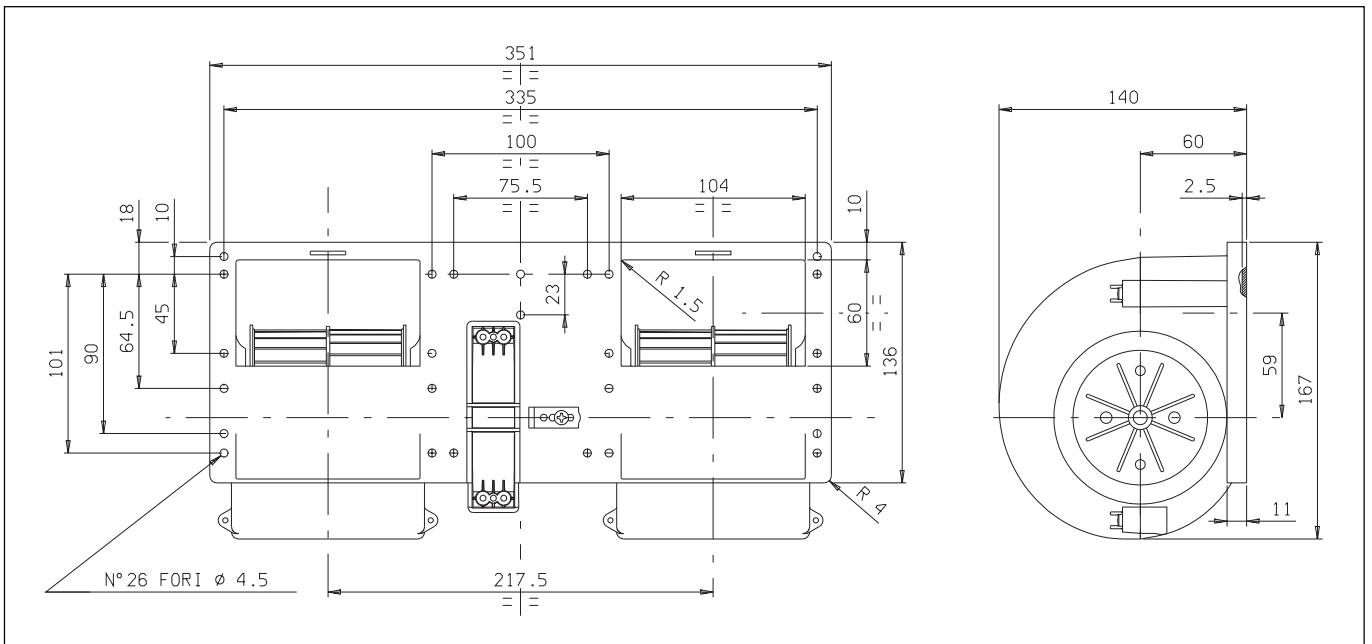
* Per i vs. ordini consultare pag.1
* For your orders see pag.1



Tensione di prova 13 V cc - Test voltage 13 V DC

Pressione statica Static pressure mm H ₂ O	Portata Airflow m ³ /h	Corrente assorbita Current input A
0	1130	34,5
10	1050	32,5
20	980	31,0
30	900	29,5
40	820	28,0
50	730	26,0
60	630	24,0
70	470	20,5
80	280	15,8
90	140	14,0
95	0	13,0

Static pressure: 1 mm H₂O = 0,04 in. H₂O
Airflow: 1 m³/h = 0,59 cfm



* A richiesta, disponibile anche a 2, 3 o 4 velocità
* Peso 1,800 Kg. circa
* Lunga durata
* A richiesta (per applicazioni OEM) disponibile anche in versione VLL

* On request, also available with 2, 3 or 4 speed
* Weight 1,800 Kg. approx
* Long life
* Available also in VLL version for OEM applications only